



503 South Cedar Avenue  
 South Pittsburg, TN 37380  
 423-837-5919

<https://www.lodgemfg.com/about-us/lodge-factory-stores.asp>



**HAMMERS**  
 DEPARTMENT STORE  
 220 South Cedar Ave  
 South Pittsburg, TN 37380  
 423-837-7396



*Rex Pesnell, Mayor  
 Jerry Don Case, Vice Mayor  
 John Matthews, Alderman  
 Mark Payne, Alderman  
 Johnny Sisk, Alderman*



# "Why Not Kimball" Tennessee



**Exit 152 I-24**

**Come Eat, Shop  
 & Stay with Us**

## Lodging



America's Best Value Inn  
 130 Main Street  
 Kimball, TN 37347  
 423-837-7933  
[www.americasbestvalueinn.com](http://www.americasbestvalueinn.com)

Comfort Inn  
 205 Kimball Crossing Drive  
 Kimball, TN 37347  
 423-837-2479  
[www.comfortinn.com/hotel-kimball-tennessee-TN348](http://www.comfortinn.com/hotel-kimball-tennessee-TN348)



Hampton Inn  
 100 Hampton Inn Drive  
 Kimball TN 37347  
 423-228-4270  
<http://hamptoninn3.hilton.com/en/hotels/tennessee/hampton-inn-kimball-CHAKMHX/about/index.html>



Holiday Inn Express  
 300 Battle Creek Road  
 South Pittsburg, TN  
 423-837-1500  
<http://www.ihg.com/holidayinnexpress/hotels/us/en/kimball/kbltn/hoteldetail>



Super 8 Kimball  
 395 Main Street  
 Kimball, TN 37347  
 423-837-7185  
<http://www.super8.com/hotels/tennessee/kimball/super-8-kimball/hotel-overview>



Town of Kimball  
 675 Main Street  
 Kimball, TN 37347  
 423-837-7040  
[www.townofkimball.com](http://www.townofkimball.com)  
 In Case Emergency Dial 9-1-1  
 Non Emergency Police or Fire  
 Call 423-837-7554



Kimball Park 3591 Industrial Blvd. Kimball, TN



# Outdoor Activities



Natural Bridge is a three-acre natural area located in Franklin County. Natural Bridge is a 25 feet high

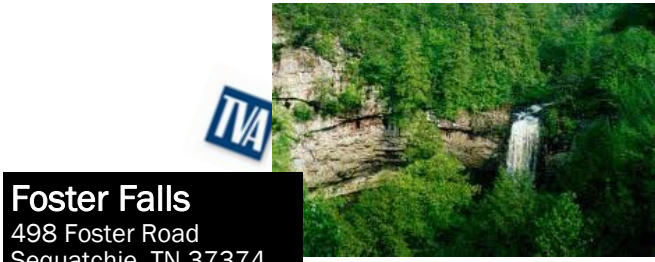
natural sandstone arch with a span of 50 feet that provides a scenic overlook of Lost Cove. There is a wet weather spring associated with a rock house located behind the natural bridge. Location 11745 US 41 Monteagle, TN  
<http://www.state.tn.us/environment/natural-areas/natural-areas/natural/>



**Russell Cave National Monument**  
 3729 County Road 98  
 Bridgeport, AL  
[www.nps.gov/ruca/index.htm](http://www.nps.gov/ruca/index.htm)



**Prentice Cooper State Forest**  
 3998 Game Reserve Road  
 Chattanooga, TN  
[www.tn.gov/agriculture/article/ag-forests-sf-prentice-cooper](http://www.tn.gov/agriculture/article/ag-forests-sf-prentice-cooper)



**Foster Falls**  
 498 Foster Road  
 Sequatchie, TN 37374  
[http://www.tnvacation.com/vendors/foster\\_falls/](http://www.tnvacation.com/vendors/foster_falls/)

**Trials Training Center**  
 300 Woodland Rd.  
 Sequatchie, TN 37374 423-942-8688  
[trialstrainingcenter.com](http://trialstrainingcenter.com)

**Mountain Goat Trail**  
 Sewanee—Monteagle  
[www.mountaingoattrail.com](http://www.mountaingoattrail.com)

**Fall Creek Falls State Park**  
 2009 Village Camp Road Spencer, Tennessee 38585  
[tnstateparks.com/parks/about/fall-creek-falls](http://tnstateparks.com/parks/about/fall-creek-falls)

**Grundy Forest State Natural Area**  
 351 Fiery Gizzard Road Tracy City, TN 37387  
[www.state.tn.us/environment/natural-areas/natural-areas/grundy/](http://www.state.tn.us/environment/natural-areas/natural-areas/grundy/)

**Stone Door**  
 1183 Stone Door Road Beersheba Springs, TN 37356  
<http://www.backpackcamp.com/SavageStoneDoor.html>

**Chimney Park Natural Area**  
 6191 Pocket Road Whitwell, TN 37397  
[www.state.tn.us/environment/natural-areas/natural-areas/chimney-park/](http://www.state.tn.us/environment/natural-areas/natural-areas/chimney-park/)

**Sequatchie Cave State Natural Area**  
 518 Shady Grove Road Sequatchie, TN 37374  
[www.tn.gov/environment/article/na-na-sequatchie-cave](http://www.tn.gov/environment/article/na-na-sequatchie-cave)

**Franklin State Forest**  
 310 Firetower Road Sewanee, TN 37375  
[www.tn.gov/agriculture/article/ag-forests-sf-franklin](http://www.tn.gov/agriculture/article/ag-forests-sf-franklin)

**Savage Gulf State Natural Area**  
 31557 State Route 399 Palmer, TN 37365

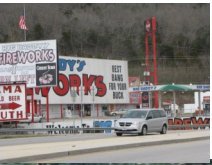
**Shellmound Public Use Area**  
 2745 TVA Road Jasper, TN 37347  
 423-942-9857 or 423-421-4374

**Marion County Park**  
 9696 Highway 41 Jasper, TN 37347  
 Phone: (423) 942-6653

**Hales Bar Marina**  
 1265 Hales Bar Road Guild, TN 37340  
 423-942-9000  
[www.halesbarmarina.com/](http://www.halesbarmarina.com/)

**Marion County Park**  
 9696 Highway 41 Jasper, TN 37347  
 Phone: (423) 942-6653

**Gas Stations & Convenience Stores**  
 •Twice Daily's  
 •Raceway  
 •Space Age  
 •TN/AL Fireworks



**Kimball Area Restaurants**

- ◆ Arby's
- ◆ China Buffet
- ◆ Cracker Barrel
- ◆ Domino's Pizza
- ◆ EL Toril
- ◆ Kentucky Fried Chicken
- ◆ Krystal
- ◆ Little Caesar's
- ◆ Long John Silvers
- ◆ Los Amigos
- ◆ McDonald's
- ◆ Pizza Hut
- ◆ Shoney's
- ◆ Subway
- ◆ Taco Bell
- ◆ Waffle House
- ◆ Wendy's

**Other Local Eateries**

- High Point Restaurant  
 224 Main Street  
 Monteagle, TN
- Papa Ron's  
 402 West Main Street  
 Monteagle, TN
- Smokehouse Restaurant  
 850 West Main Street  
 Monteagle, TN
- Stevarino's Italian Eatery  
 230 South Cedar Avenue  
 South Pittsburg, TN
- Western Sizzlin Steak House  
 1130 Hwy 28  
 Jasper, TN

109 Main Street  
 Tracy City, TN  
 931-592-3171  
  
[www.thedutchmaid.com](http://www.thedutchmaid.com)

**Hair/Nail Salons**

- All About Hair
- Angie's Shear Designs
- Donna's Style Center
- Shirley's Style Senter
- Smartstyle

**Banks/Credit Unions**

- First Jackson Bank
- Tennessee Valley F C U

**Medical Centers**

- Parkridge West Medical Center  
 1000 Hwy 28  
 Jasper, TN  
 423-837-9500
- Physicians Care  
 325 E 12th Street  
 South Pittsburg, TN  
 423-648-4460